

# Outline of EXPO 2025 Osaka, Kansai, Japan



Japan Association for the 2025 World Exposition

# 1. Outline

## Title

Expo 2025 Osaka, Kansai, Japan

## Theme

Designing Future Society for Our Lives

## Subthemes

Saving Lives

Empowering Lives

Connecting Lives

## Concept

People's Living Lab

## Venue

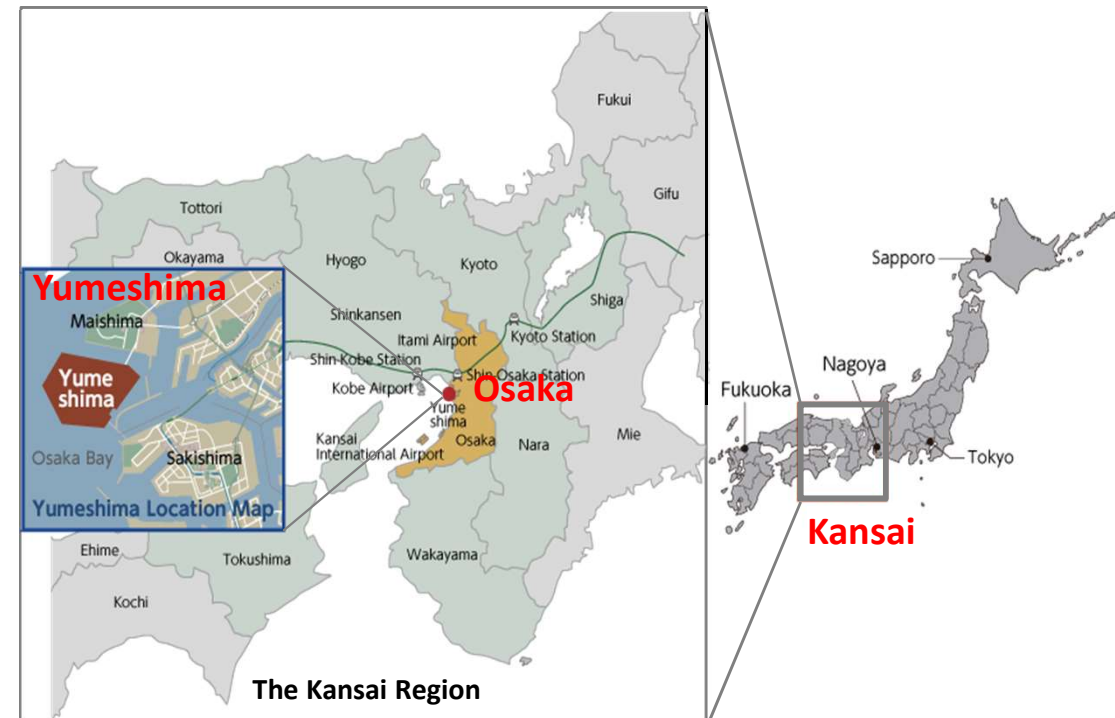
Yumeshima Island, Osaka

## Period

13 April – 13 October 2025

## Projected number of visits

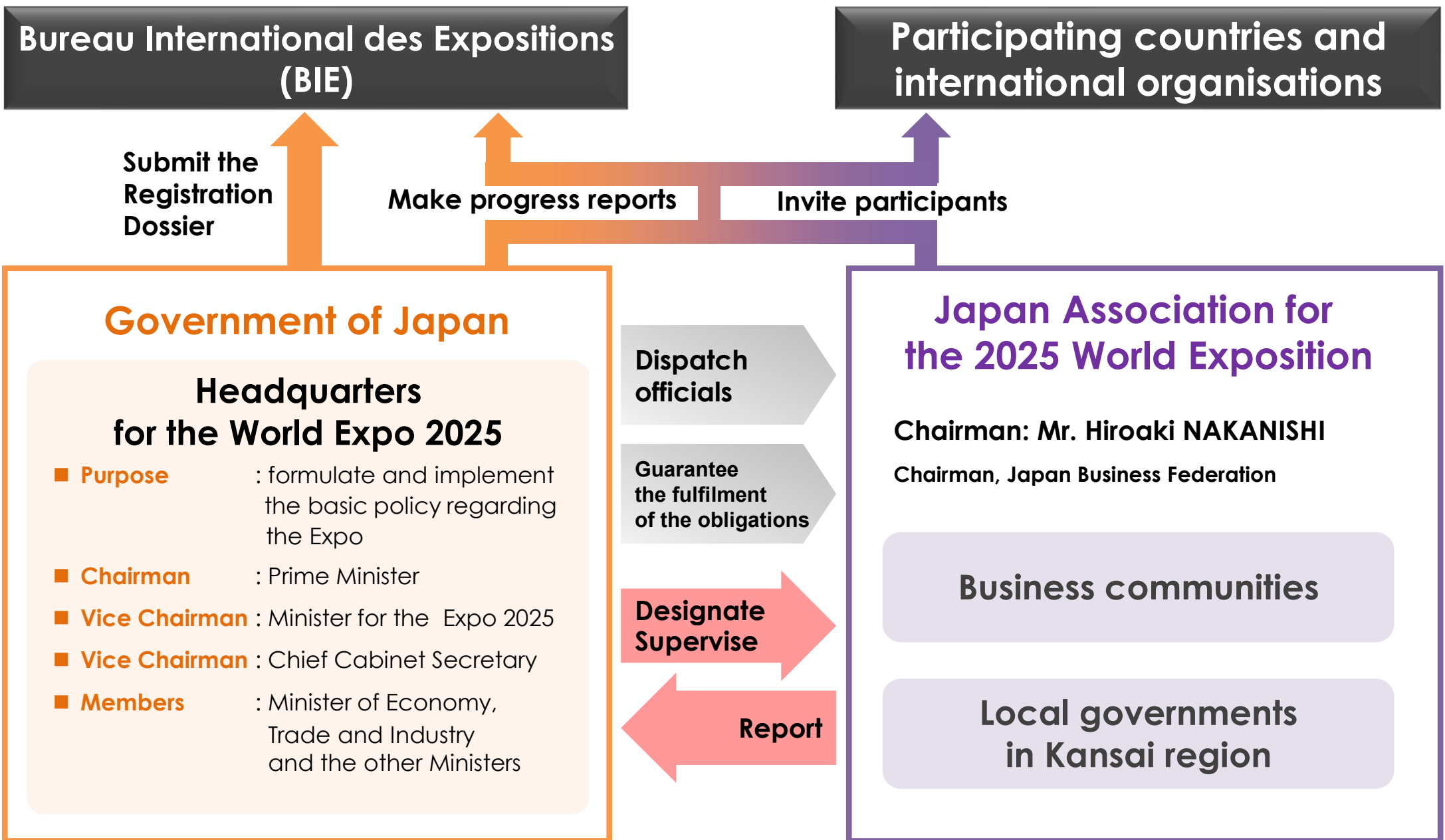
Approximately 28.2 million (3.5 million from overseas)



Yumeshima, the site for the Expo, is an artificial island located in the Osaka Bay Area. Within its 50km vicinity lies “Kyoto” and “Nara,” the ancient capitals of Japan.

Gourmet, entertainment, and many popular tourist spots make Osaka and the Kansai region attractive.

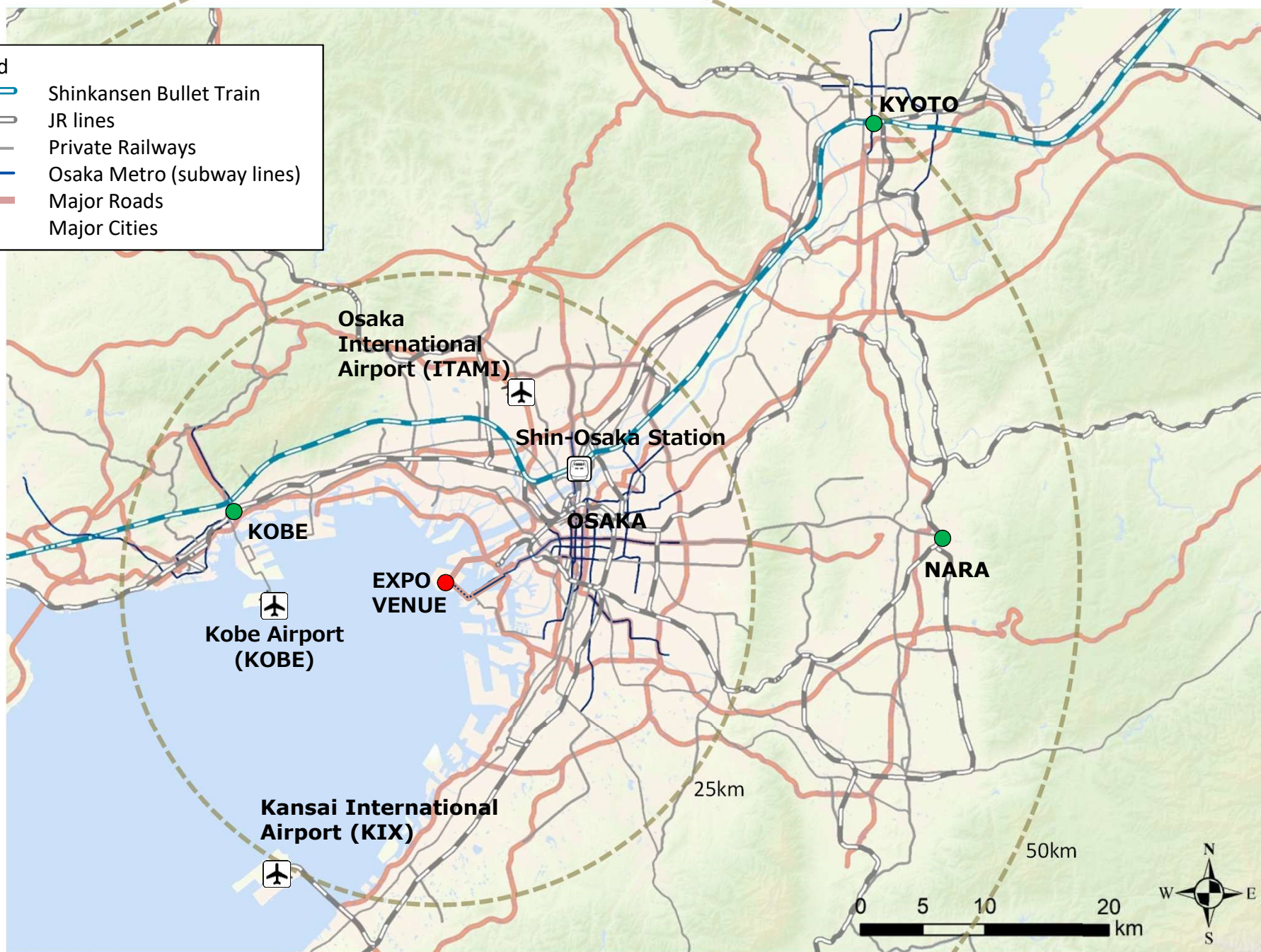
# 2. Organisations for Expo 2025





# 3. Location of Expo Venue

- Legend
- Shinkansen Bullet Train
  - JR lines
  - Private Railways
  - Osaka Metro (subway lines)
  - Major Roads
  - Major Cities





## 4. Access to Yumeshima

Overseas and domestic visitors have three options to access to Yumeshima: by air, water (ferries/cruise ships), and land (railways/cars). In addition, a park-and-ride system utilizing shuttle buses will be implemented to alleviate traffic congestion around the venue.





## 5. Bird's Eye View of Yumeshima (Expo Venue)



Photo: Jan. 2020

# 6. Milestone

2019	Jan.	Japan Association for the 2025 World Exposition founded.
	Dec.	Senior Advisors appointed. Registration Dossier submitted to BIE.
	June	Start “Infectious Disease Measures Review Committee” chaired by Professor Kazunori Tomono, Department of Infection Control and Prevention, Graduate School of Medicine, Osaka University/ Head of a panel of experts commissioned by Osaka Prefectural Government on Novel Coronavirus measures.
2020	July	Ten Producers appointed.
	Aug.	Logo selected.
	Dec.	<b>Registration Dossier approved (target)</b> <b>Start sending out official invitation to participate in Expo 2025 to countries and international organisations.</b>
2021	Oct. - Mar. '22	Expo 2020 Dubai
2023	April	Plots will be made available to participants (expected).
2024	July	Modules and pavilions built by the Organiser will be available to participants.
2025	Apr.- Oct.	<b>EXPO 2025 OSAKA, KANSAI, JAPAN</b>



# 7. What We Aim to Achieve at the Expo

## ■SDGs and beyond

- Expo 2025 Osaka, Kansai will be a platform to achieve the Sustainable Development Goals (SDGs) set by the United Nations by 2030





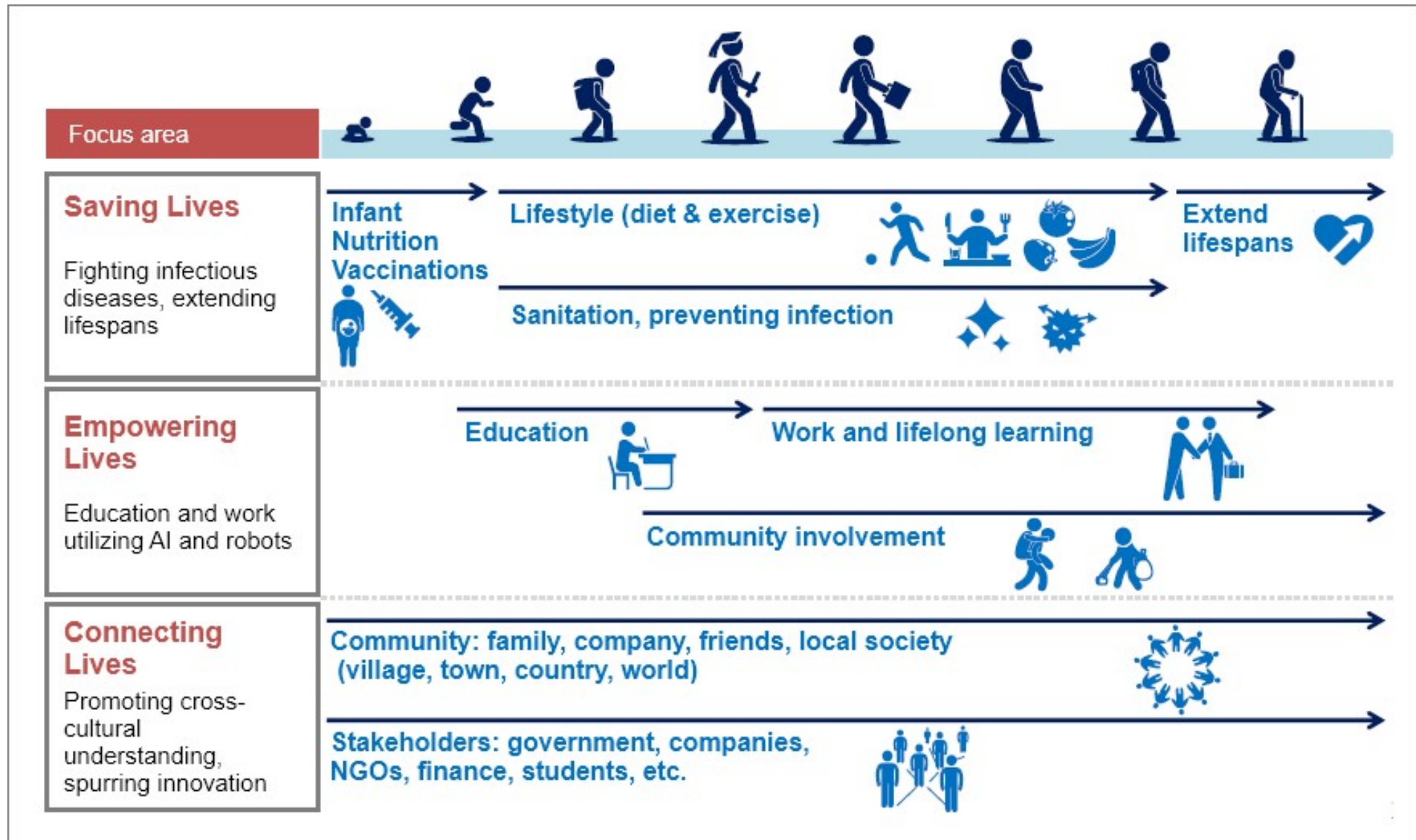
# “ Designing Future Society For Our Lives ”

The theme calls on each and every individual to think about his or her own aspirational life, empower them to realize their full potential, and push forward the worldwide effort to creating a shared vision of a sustainable society.



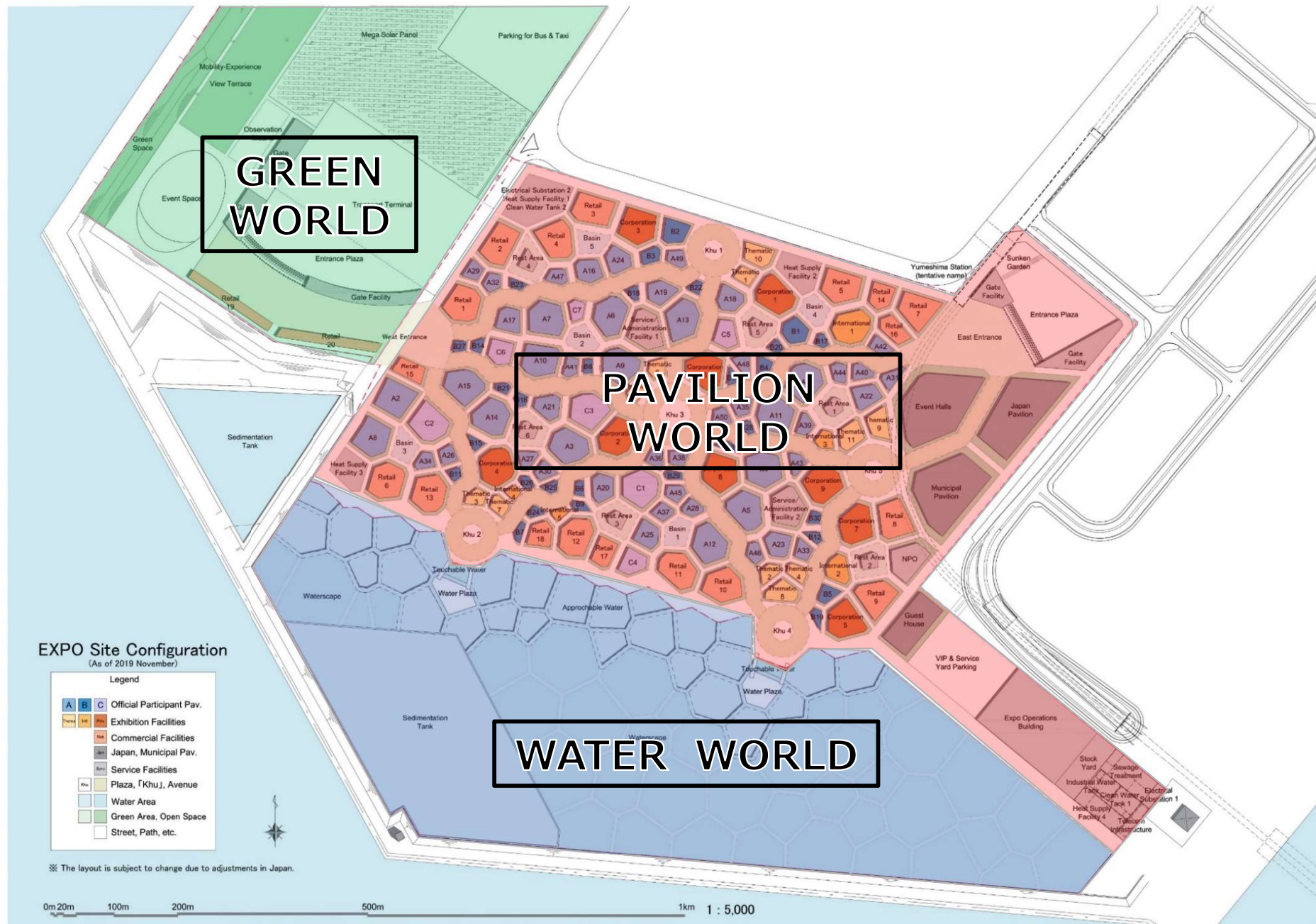
# 9. Subthemes: The Lives in 3 Areas

Expo 2025 Osaka, Kansai focuses on our Lives in 3 areas.





# 10. Expo Site Configuration



Note: As of November 2019. The layout is subject to change due to adjustments in Japan.

# 11. Exhibition Formats for Participants



## ■ Type A Pavilion: Self-Built Pavilion

Pavilions where the participants may freely decide on the form and design.

- 50 plots/sections for official participating countries
- Target Date for submitting “Theme Statement” as part of the application for the allocation of exhibition space: 30 June 2021

## ■ Type B Pavilion: Organiser-Built (Module) Pavilion

The Organiser (Association) will build modules and offer them to participating countries and international organisations. The participants are free to determine the content, and to design the interior and exterior of their pavilion.

- 30 sections for official participating countries, 5 sections for 25 international organisations
- Target Date for submitting “Theme Statement” as part of the application for the allocation of exhibition space: 31 December 2021

## ■ Type C Pavilion: Organiser-Built Shared Pavilion

Pavilions will be built by the Organiser, who will determine its form and design. Participating countries will be provided with sections of these pavilions. Participating countries are free to decide content and design within their allocated section of Type C Pavilions.

- Spaces in 7 Organiser-Built shared pavilions for 70 countries.
- Target Date for submitting “Theme Statement” as part of the application for the allocation of exhibition space: 31 December 2021



# 12. Overall Allocation

			Plot area (㎡)	Floor area (㎡)	Number of floors	Sections	Notes	Estimated Cost for Participation	
Japan Pavillion			12,900	9,000		1			
Theme Pavillion (area)	(11 sections)	T - 1	1,750	2,400	2	4	5 -7 themes		
		T - 2	900	1,200	2	7			
Type A Pavillion	Participating Countries (50 sections)	A - 1	3,500	2,400	1	15		USD	25 Million
		A - 2	1,750	1,200	1	10		USD	13 Million
		A - 3	900	600	1	25		USD	6 Million
	Private-Sector Corporations (9 sections)		3,500	2,400	1	9			
Type B Pavillion	Participating Countries (30 sections)	B - 1	1,750	1,200	1	2		USD	8 Million
		B - 2	900	600	1	3		USD	4 Million
		B - 3	450	300	1	25		USD	2 Million
	International Organisation (5 sections)	I - 1	3,500	2,400	1	1			
		I - 2	1,750	1,200	1	1			
		I - 3	900	600	1	1			
		I - 4	450	300	1	2			
Type C Pavillion	(7 sections)	Large	-	300	1	-		USD	2 Million
		Medium	-	200	1	-		USD	1.5 Million
		Small	-	82	1	-		USD	0.7 Million
Municipal Pavillion			12,900	9,000		1			
NPO Room			3,500	2,400		1			
Event Facilities			14,200	9,900		1(2)	Special events, Small events		
Guest House			6,000	4,200		1			
Facilities for Food, Beverages, and Merchandise Sales			3,000	2,100		20			

\*Building coverage ratio: 70%

\*Plot area per section for Type C Pavillion: [C-1]3,500㎡(3sections), [C-2]1,750㎡(3sections), [C-3]900㎡(1 section)

## Note: Cost of Participation

For further details and estimation assumptions regarding the expense models shown above, please refer to “Appendix 6-1. Cost of Participation” of the Registration Dossier (submitted on December 27, 2019). [https://www.meti.go.jp/policy/exhibition/pdf/EXPO2025\\_RD\\_EN\\_A4.pdf](https://www.meti.go.jp/policy/exhibition/pdf/EXPO2025_RD_EN_A4.pdf)

# 13. Logo of Expo 2025 Osaka, Kansai



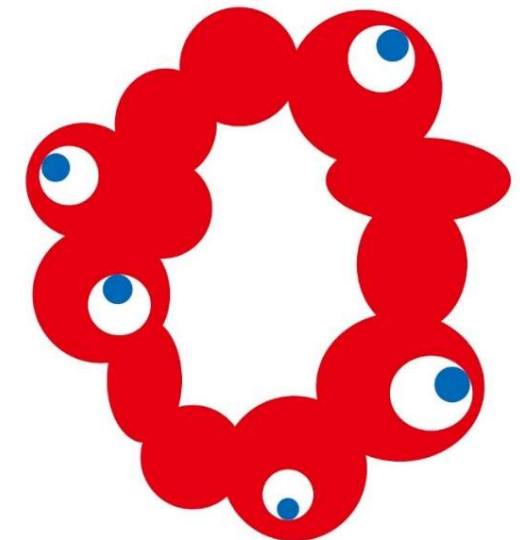
## The concept of the logo creator

Coming here, our heart dances, leaps and bounces.  
This is the place that remind us of what it is to be living.

Our mind dances when we discover science and technologies.  
Our heart leaps when we are excited about entertainments.  
Our soul bounces when we are exposed to sensational arts and creativities.

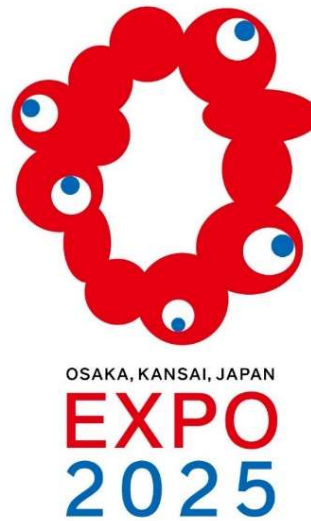
These sensations find the way through the inner-most part of ourselves, giving energy to cells that are the foundation of our life.

Expo 2025 Osaka, Kansai presents a future we are about to encounter around the corner. Uniqueness of individuals gets uplifted, converged and connected. This is where we witness life full of brightness and glow.



OSAKA, KANSAI, JAPAN  
**EXPO**  
**2025**





International Relations Bureau

**Japan Association for the 2025 Japan World Exposition**

1-14-16 Nanko-kita, Suminoe-ku, Osaka 559-0034

TEL: +81-6-6625-8721

<https://www.expo2025.or.jp/en/>

Oct. 2020

# Appendix 1 Producers

## Expo Site Design Producer

FUJIMOTO Sou Architect

## Expo Site Operation Producer

ISHIKAWA Masaru Planner, Producer

## Thematic Project Producer

FUKUOKA Shinichi	Biologist, Professor, Aoyama Gakuin University
KAWAMORI Shoji	Animation director, Mechanical designer
KAWASE Naomi	Filmmaker
KOYAMA Kundo	Broadcast writer
ISHIGURO Hiroshi	Professor Emeritus, Osaka University, Visiting Director, ATR Hiroshi Ishiguro Laboratories
NAKAJIMA Sachiko	Musician, Mathematician, STEAM educator
OCHIAI Yoichi	Media artist
MIYATA Hiroaki	Professor, Keio University



# Appendix 2 Senior Advisors

## Senior Advisor

ANDO Tadao	Architect
IKENOBO Senko	Headmaster Designate of Ikenobo
OSAKI Hiroshi	Representative Director & Chairman of the Board, Yoshimoto Kogyo Holdings Co., Ltd.
KATSURA Bunshi	Rakugo Artist
KAWASE Naomi	Filmmaker
Robert CAMPBELL	Director-General of the National Institute of Japanese Literature
KOSHINO Junko	Designer
GONOKAMI Makoto	President, The University of Tokyo
Oussouby SACKO	President of Kyoto Seika University
SEN Soshitsu XVI	Grand Tea Master, Urasenke
NISHIO Shojiro	President, Osaka University
MIYATA Ryohei	Commissioner for Cultural Affairs
YAMAGIWA Juichi	Former President, Kyoto University
YAMAZAKI Naoko	Astronaut
YOSHIDA Kenji	Director-General of National Museum of Ethnology

(In Japanese alphabetical order)